

# MISSOURI STATE BEEKEEPERS ASSOCIATION



PRESIDENT  
MIKE ROLING  
2012 S. Franklin  
Springfield, MO 65807  
(417) 887-5763

SECRETARY  
JEAN YEMM  
R.R. 1, Box 169  
Marquand, MO 63855  
(314) 783-2858

1ST VICE-PRESIDENT  
WALTER BIGELOW  
110 E. Porte Cima Pk  
Kansas City, MO 64114  
(816) 363-0754

TREASURER  
TRUMAN C. HARDIN  
1829 W. Washita  
Springfield, MO 65807  
417-886-2602

2ND VICE-PRESIDENT  
DR. FLERNOY JONES  
1215 Subella Drive  
Columbia, MO 65201  
314-445-5780

EDITOR  
CAROL R. BOECKMANN  
619 Mendelsohn Drive  
Kirkwood, MO 63122  
314-821-1856

VOLUME 21

QUARTERLY NEWSLETTER  
SEPTEMBER 1983

NUMBER 3

DEAR BEEKEEPING FRIENDS,

Our Fall State Meeting fast approaches -----

DATE - Saturday, October 15  
PLACE - Osage Honey Farm, Sibley, Mo.

As stated in the June newsletter, Mr. George Vanarsdall has generously invited all to his beekeeping operation - The Osage Honey Farm - in Sibley. (Directions are found on the last page.) Mr. Vanarsdall's newly constructed honey processing building will be the site of the meeting. Plenty of room for all!!!

The Vanarsdalls and their crew are experienced in handling large groups due to the schools and organizations who frequently tour the Farm. Our program chairman, Mr. Walter Bigelow, has worked long and closely with Mr. Vanarsdall to put the Program together. (Program agenda is on page .)

Among the morning's first activities will be a greeting by the Mayor the Honorable Earl Wyatt. Also Mrs. Doris Reed of Fort Osage will give historical background on the Fort which is located only 500 yards from the Farm and which you may wish to visit during lunch or the late afternoon.

And, speaking of lunch, this will be served on the premises by Mr. Vanarsdall's staff. There will be a slight charge but, as Mr. Bigelow said, "The prices will be friendly."

The time slots for the morning and afternoon sessions are purposely vague so that the guest speaker Dr. Walter Gojmerac and Mr. Vanarsdall can coordinate the presentations to their needs.

During the Morning Session Mr. Vanarsdall and his crew will give an actual demonstration of how they process honey at Osage Honey Farm. Dr. Gojmerac will follow this with a further presentation on "Honey Processing". If you remember from the June newsletter, Dr. Gojmerac, an entomologist at the University of Wisconsin since 1965, has written the paper Honey, Guidelines for Efficient Production.

In the Afternoon Session, Dr. Gojmerac will focus on "Fall and Winter Management". This will be followed by the business portion of the meeting. After this the meeting will move from the new building to Mr. Vanarsdall's bottling plant. The honey which was processed in the morning will be bottled during this demonstration.

For those who wish to come to the Executive Meeting on Friday evening or who just want to drive in Friday, Mr. Bigelow has made arrangements at the

EAST WESTERN MOTEL  
1110 No. 7 Highway  
Blue Springs, Mo. 64015  
(816) 229-6363

All reservations should be called in collect to Shari Blevins. Be sure to say that you are with the Missouri State Beekeepers.

Motel rates are \$28 for a single and \$34 for a double (up to 4 people).

The motel is located at the Northeast corner of I 70 and No. 7 Highway at Blue Springs.

To get to George's place from the motel - - -

Go east on I 70 to Grain Valley exit (exit 24) between the highway mileage markers # 24 and 25. Turn North to Buckner (8 miles) and continue North on BB Highway about 4 or 5 miles, following the signs saying Osage Honey Farm and Fort Osage.

\* \* \* \* \*

### STATE FAIR REPORT

The Honey Booth at this year's Missouri State Fair was hosted by the Two Rivers Beekeepers Association. The Chairman was Mr. Jay Tohtz.

According to Mr. Tohtz, there were more displays than in many previous years. Lots of comb honey was entered. And the whole range from light to dark extracted honey was represented. The Grand Champion Winner was Mr. Charles Perrin from the Midwestern Beekeepers.

CONGRATULATIONS, MR. PERRIN!!!!

At 10:30 a.m. each day in the Home Economics building Mrs. Jean Tohtz put on a cooking demonstration using honey. Each day was something different for the folks to sample from the Honey Lady — from Honey Chili to Zucchini Bread to Honey Queen Kisses to Honey Ice Cream, etc. (Recipes are published on the following pages. Pictures and a front page story about the honey cookery demonstration were in the Sedalia paper. Twelve hundred copies of the recipes were given out during the Fair.

Thursday, August 18, was Legislature Day at the State Fair. Mr. Tohtz spoke with 50 or 60 legislators concerning honey production in Missouri and roadside planting.

Mr. and Mrs. Tohtz stayed during the entire run of the State Fair. Many members from the local associations came to help. These helpers filled the customers' orders, answered many questions, and generally promoted honey. Mr. Tohtz noted that some members were particularly adept at selling certain sizes and kinds of honey — such as, Mr. V.O. "Cut Comb" Dodge who sold at least 40 jars of cut comb honey in one day; Mr. Russ "Big Jar" Nelson who specialized in the large sizes; and Mr. John "Squeeze Bear" Walther who focused on the youngsters and sold about 75 squeeze bears.

THANKS TO ALL who gave of their time and energy to help man the Honey Booth - - - - -

Wednesday, August 10	Robert Willingham (Boone Regional)
	Charles Wills (Ozarks)
	Truman Hardin (Ozarks)
Thursday, August 11	Robert Willingham (Boone Regional)
	Charles Wills (Ozarks)
	Truman Hardin (Ozarks)
	Fowler Young (Boone Regional)
	Tom Dixon (Two Rivers)
	Ollie Illy (Two Rivers)
Friday, August 12	Clayton and Louise Johnson (Boone Regional)
Saturday, August 13	C. ig Oliver (Central Missouri)
	John Walther (Central Missouri)
Sunday, August 14	Wayne Atkins (Boone Regional)
	Norman Holman (Boone Regional)
	Arthur Bosges (Boone Regional)
	Jim Thaxter (Boone Regional)
Monday, August 15	Russ Nelson (Eastern Missouri)
	Dave Crouch (Two Rivers & Lincoln County)
	Kay and Catherine Siron (Midwestern)

Tuesday, August 16	Russ Nelson	(Eastern Missouri)
	V.O. Dodge	(Midwestern)
	Charles Perrin	(Midwestern)
	Flerney Jones	(Boone Regional)
Wednesday, August 17	John and Shirley Wilson	(Dallas County)
	Clarence Vogeler	(Midwestern)
Thursday, August 18	John and Shirley Wilson	(Dallas County)
	Robert Stephens	(Eastern Missouri)
	Walter Bigelow	(Midwestern)
Friday, August 19	Henry Boeckmann	(Eastern Missouri)
	Jan Hesse	(Two Rivers)
	Vernon Reynolds	(Two Rivers)
	Al Schwendemann	(Two Rivers)
	Stanley Garton	(Boone Regional)
Saturday, August 20	Earl and Judy Murphy	(Central Missouri)
Sunday, August 21	Charles Perrin	(Midwestern)
	Charles Wills	(Ozarks)
	Truman Hardin	(Ozarks)

Special thanks to Mr. Truman Hardin and Mr. Charles Wills who gave their experience of past years to help open and close the Honey Booth

Special thanks to Mr. Truman Hardin and Mr. Charles Wills who helped to set up and take down the Honey Booth at the Fair. Also special thanks to Mr. Fowler, last year's Chairman, who helped through opening day.

And VERY SPECIAL THANKS to Mr. and Mrs. Jay Tohtz who spent from 9:00 a.m. to 9:00 p.m. at the Honey Booth during the entire ten days of the Fair. If you have ever spent one day at the Fair or at a craft show selling, you can appreciate the amount of dedication and energy that it takes to spend the full ten days.

The only cloud over the Fair (literally and figuratively!!) was that the terribly high temperatures kept attendance down. By the end of the first four days of the Fair, attendance was down by almost 49,000 compared to last year. As a result, profits were down. A full financial report on the Fair will be given at the State Meeting.

\* \* \* \* \*

"A psychology professor conducted an experiment to prove a point about work. He hired a man to hit a log with the reverse side of an ax. The man was told that he would be paid twice the amount he normally made. The man lasted half a day. He gave it up, explaining, 'I have to see the chips fly'." Bits and Pieces, Vol. D/No. 1B, ps. 5

booth. Charles Wills and Truman Hardin volunteered to help set up and take down the booth. Clubs in Jefferson City, Troy, and Midwestern BA have volunteered to help; other clubs will have until May to contact Thotz. Fair dates are August 11 through 21, from 9 a.m. to 9 p.m.

Roling then announced that categories for honey competition at the Fair cannot be changed, according to Joe Francka. Therefore, more entries must be submitted this year, or the premium money now assigned to the Beekeeping Booth will be used otherwise. All of the information regarding the various categories of entries, as published in the official State Fair book, will be included in the June MSBA newsletter.

Tohtz asked for prayers for member Fowler Young who is hospitalized for surgery.

Roling reported that the Executive Committee wished to recommend that the dates for the semi-annual meeting be set one year in advance to enable the Program Chairman and others to confirm plans with speakers early enough to permit more advertising of the event, including notices in the Beekeeping Journals. Such action would also facilitate reservation of desirable meeting space, such as the Auditorium in the Memorial Union. Roling appointed a Committee to report a location for the Fall 1984 meeting: Walt Bigelow, the current Program Chairman; Louis Smith of the St. Louis area; and John Wilson of the Dallas County Beekeepers. Spring meetings are always held in Columbia by charter.

Curt Dennis moved that MSBA hold its Spring meeting on the 3rd weekend in March, subject to availability of a suitable building, and its Fall meeting on the 3rd weekend in October at a location picked by the Committee in charge. Bob Graham seconded. Motion passed.

Roling then announced that MSBA had been invited to hold its Fall 1983 meeting at the Osage Honey Farm of George Vanarsdall in Sibley, Mo. Vanarsdall personally extended his invitation, indicating the availability of lodgings and meals nearby and other amenities. Jay Tohtz moved to accept the invitation and hold the Fall meeting at the Osage Honey Farm. John Wilson seconded. Motion passed.

Charles Wills, who has been selling honey in bulk to health food stores where customers can serve themselves, reported that the State Health Department has been investigating this practice. Some abuses, particularly in large metropolitan areas, have been cited and may lead to requirements that every food be packaged. Bulk foods, that are consumed without cooking, may best be sold where the salesperson draws the honey (or other product) into the customer's own container. Members should be alert to the problem.

Larry Hensley mentioned that honey is often used as a "loss leader" in such sales. He wondered if MSBA might support some form of tariff on the cheap imported honey. Discussion of tariff, quotas, and price



supports followed. Mr. Glen Stanley urged members to write their Congressmen to keep the present price support in effect.

Jay Tohtz moved that the Association spend up to \$100 for a tape cassette recorder and tapes and patch cord for the secretary's use in keeping records of programs and meetings. Charles Wills seconded. Motion passed.

Mr. Tohtz moved to adjourn. Mr. Niswonger seconded. Motion passed. Meeting adjourned at 4:21 p.m.

\* \* \* \* \*

Taken from the July 8 issue of the National Honey Report.

"U.S. honey production in calendar 1983 may increase from 1982's 221 million pounds. Despite the cold wet spring, in the Northern and Eastern States, floral sources are expected to be plentiful and honey flows will likely be as well. California and Florida are reporting large honey crops. U.S. imports are expected to continue high in 1983, and they could top the record 92 million pounds imported in 1982. In exports, not much change is expected from last year's 8.5 million pounds. Domestic consumption in 1983 will likely increase further from 1982's 242 million pounds, and could total over 250 million, or 1.07 pounds per capita.

"World honey supplies have been increasing more rapidly than world demand, particularly since 1980, and have caused prices to weaken. Bulk honey prices received by domestic beekeepers have been relatively constant in recent years. However, the U.S. support price for honey has increased rapidly, and U.S. beekeepers have been forfeiting larger and larger amounts of honey to the CCC. This contrasts with the earlier years when beekeepers used the program as a financial instrument to market honey in orderly manner -- using the CCC loans to pay operating expenses before the honey was later redeemed for market disposition."

<u>Year</u>	<u>U.S. Average Honey Market Price</u>	<u>U.S. Support Price</u>	<u>U.S. Honey Imports</u>
		<u>Cents per lb.</u>	<u>Million pounds</u>
1979	49.7	43.9	58.6
1980	50.6	50.3	49.0
1981	51.9	57.4	77.3
1982	52.2	60.4	92.0
1983	1/51.3	62.2	75-100

\* \* \* \* \*

"Success isn't how far you got, but the distance you traveled from where you started." Taken from Bits and Pieces, Vol. D/ No. 4, pg. 1.

FROM AROUND THE STATE

The following excerpt is from a postcard from Carl Soppelsa of Dixon.

" . . . in case anyone is interested, Bill's Farm and Hone store at Lebanon has beehives and supplies."

\* \* \* \* \*

The following excerpt comes from the June 28th letter of Mr. George T. Trial, one of our guest speakers at the March meeting, written to Mr. Truman Hardin.

"My interest in the Bee industry was increased when I had the experience of speaking at your March 12th meeting in Columbia. At that time, I realized the magnitude of the usefulness of bees and their production of honey.

My daughter provided us with some bees. We have noticed their beneficial pollination of our garden plants."

Mr. Trial is now a member of our State Association.

\* \* \* \* \*

NEWS RELEASE 7/11/83 from the HONEYDIPPERS, Jean M. Yemm, Reporter  
Marquand, Mo. 63655

"Honeydippers Beekeepers Association elected Melvin Zielinski for a two year term as President of the organization at the midsummer meeting on Sunday, July 10, 1983, held in the basement meeting room of the Ozark Federal Savings and Loan Association in Fredericktown. Mike Morris was elected Secretary-Treasurer, and Jean Yemm, Reporter.

Stan Ludwig, Secretary-Treasurer, presided in the absence of President Jack Lang, who has moved from the area. He reported that the group's exhibit at the Azalea Festival in May was very successful, with sales of the honey donated by members netting a significant sum to the treasury. Special thanks were extended to Cletus Richards for his donation of the plastic "Honey Bears" in which the honey was sold, and to Fred Kinneman for his tips on how to promote sales.

Ludwig then introduced Mike Morris, who gave a detailed program on how to make any of the woodenware -- hive bodies, bottom boards, covers, supers and frames -- needed by a beekeeper, using standard sizes of lumber and a table saw with a dado attachment. Morris impressed the audience with his efficient and time-saving techniques for producing good quality beekeeping equipment. In addition, he offered a number of ingenious tips for good management of bees and answered the easier questions posed by the members present.

Members were reminded of the Fall meeting of the Missouri State Beekeepers Association which will be held at the Osage Honey Farm of George Vanarsdall in Sibley, MO, on Saturday, October 15. The date for the next meeting of the Honeydippers was set for Sunday, October 23, 1983."

\* \* \* \* \*

Mr. Fowler Young has had two total knee replacements since last December. We wish him continued healing and complete recovery!!!

\* \* \* \* \*

The 1983 officers of the Boone Regional Association are

Pres. Stanley Garton, Rt. 1, Centralia 65240  
V.P. Wayne Thomas 2514 Brookside Court, Columbia 65201  
Sec. Mrs. Fowler A. Young, R. 6, Box 312, Columbia 65202  
Treas Stanley Whitaker, 841 Sun Valley Drive, Columbia 65201

\* \* \* \* \*

The following letter was sent to Mr. Bigelow, our program chairman, by Mr. Glen Stanley, one of the guest speakers at the March meeting.

March 29, 1983

Dear Mr. Bigelow,

"First of all I want you folks to know that I was pleased to have the opportunity to contribute something to your meeting for the benefit of your beekeepers and their beekeeping. . . ."

Mr. Hardin requested in his letter to me that I send along the dimensions of the entrance reducer. These measurements are of a size that fit bottom boards with 7/8" rails but could be modified to fit today's more common bottom boards with 3/4" rails. In any case I'll send each of you a diagram.

I wish each of you well in your 1983 season of beekeeping. Maybe we can get together again soon!"

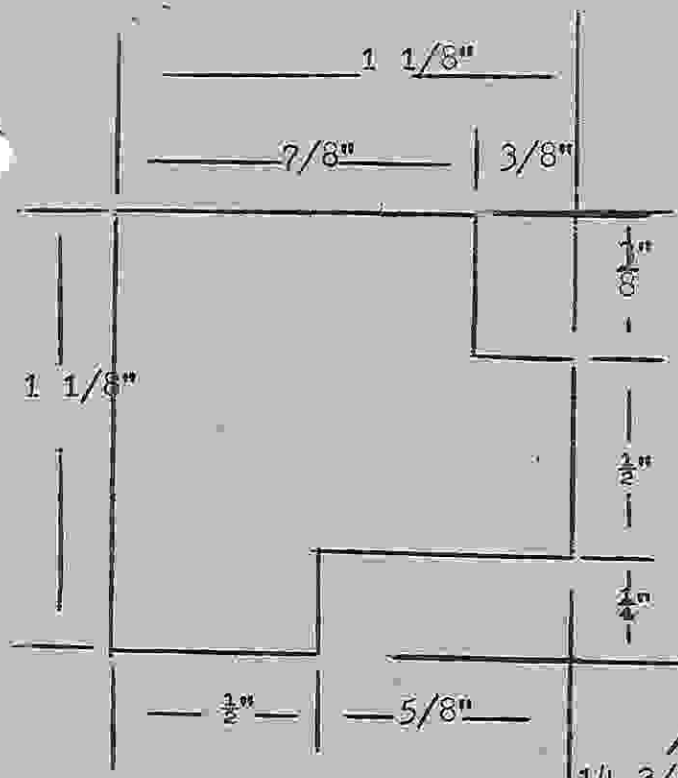
Very truly yours,  
Glen L. Stanley  
Iowa State Apiarist

The diagram for the entrance reducer is on page 13 of this newsletter.

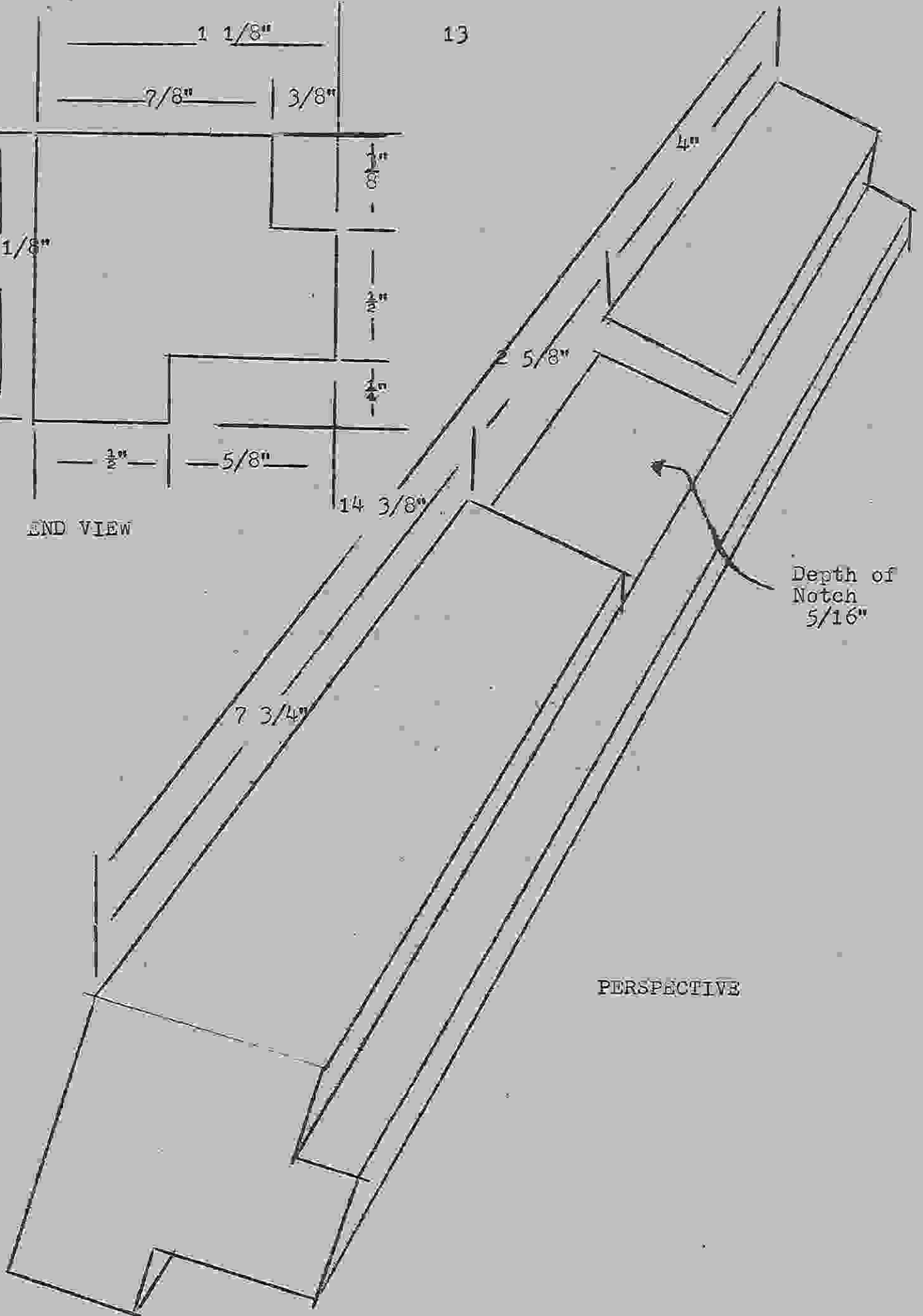
\* \* \* \* \*

"Pleasant words are like a honeycomb, sweetness to the soul and health to the body." Proverbs 16:24.





END VIEW



PERSPECTIVE

Depth of  
Notch  
 $\frac{5}{16}"$

The following is taken from the very first issue of the American Bee Journal, published January 1861, pp. 10.

### "LARGE DEPOSIT OF HONEY"

A somewhat singular discovery was made a few days ago, in the house occupied by Mrs. Gen. Winate, on the corner of Spring and High streets in St. Louis. The Arus has the following account of the story:— "The inmates of one of our largest up-town mansion houses, a few days since were surprised to find a large number of bees flying about in two of the upper rooms. As the little fellows continued to occupy the places, a bee naturalist was sent to investigate the matter.—On entering the rooms, he exclaimed:—"You have honey somewhere here," and proceeded to search for it. On removing the fire-board, he discovered that one flue of the chimney was full of honey-comb; which was hanging down into the fire-place, and the honey dropping from it; proceeding to the top of the house to sound the chimney, he found it the same; one flue of the chimney was full, and the bees were industriously at work there also. These flues of the chimney had never been used; they were plastered smooth inside, and were perfectly dark, a stone having been placed on the top of each flue. The bees had descended the adjoining flues, and found small holes about ten inches from the top of the chimney, leading into the closed flues, and through these holes they had made their way in and out. They have, as is supposed, occupied these places for three years, having been kept warm in the winter by the heat from the adjoining flues. On removing the fire-board the bees, seeing the great light which had broken in upon them, descended to the room and gathered on the windows, until they covered to the thickness of three inches. It is estimated that there are in the two flues from 40,000 to 50,000 bees, and from two to three thousand pounds of honey."

\* \* \* \* \*

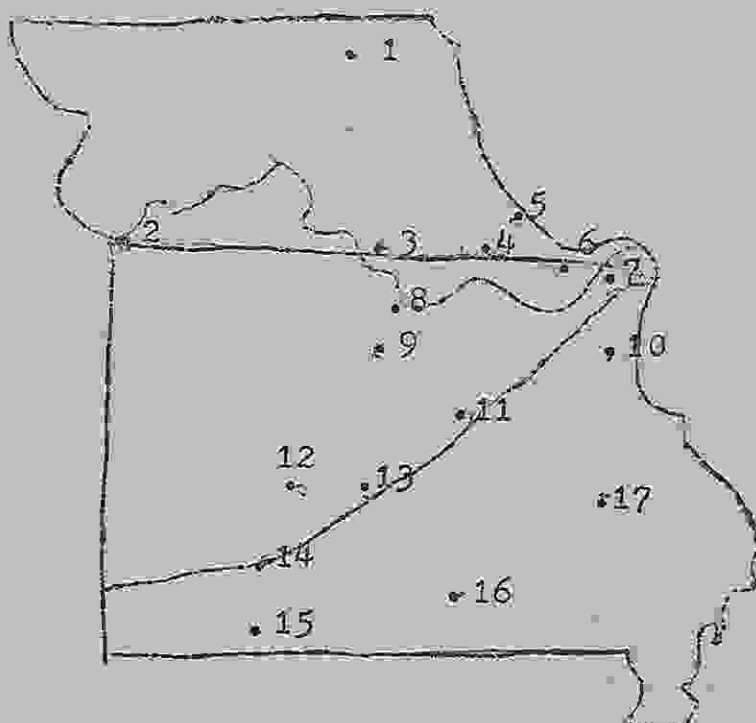
The following is taken from The Kentucky Beekeepers' Quarterly, Vol. 24, No. 2, April, May, June 1983.

"If any of you beekeepers have not discovered the hardy shrub-like bush known as Buckbrush (also called Coralberry), I suggest that you get acquainted with it if at all possible. Dr. Lovell describes it in his "Honey Plants Manual" as follows:

"This low, woody shrub forms dense thickets in hilly, rocky country. The small pinkish flowers secrete nectar abundantly in the middle of the summer when other plants are scarce. The coral-red berries persist all winter. The honey is extra light amber to light amber, with a good flavor and body. (This honey blends well with the late clovers.) Surpluses up to 50 pounds are reported by Morris Black in Kentucky."

Farmers who are accustomed to having "clean fence rows and weedless fields" will not tolerate this fast-spreading shrub. However, it is definitely a major source of nectar in those hilly areas where it is found and for the time of the year during which it blooms."

\* \* \* \* \*

MISSOURI LOCAL BEEKEEPING ASSOCIATIONS

1. NORTH MISSOURI BEEKEEPERS ASSOCIATION (Around Kirksville and Macon)  
Sec. Ronald Whitacre, Box 81, Glenwood 63541
2. MIDWESTERN BEEKEEPERS ASSOCIATION (Kansas City area)  
Sec. Kathleen Leary, 909 East 48 Street, Kansas City 64110  
(816) 753-8505
3. BOONE REGIONAL BEEKEEPERS ASSOCIATION (Columbia area)  
Sec. Mrs. Fowler A. Young, R. 6, Box 312, Columbia 65202
4. TRI-COUNTY BEEKEEPERS ASSOCIATION (Warrenton area)  
Sec. Joan Grant, Rt. 4, Box 16, Warrenton 63383
5. LINCOLN COUNTY BEEKEEPERS ASSOCIATION (Troy area)  
Sec. Margaret Hornburg, Rt. 1A, Box 314, Hawk Point 63349  
(314) 338-4453
6. TWO RIVERS BEEKEEPERS ASSOCIATION (St. Charles area)  
Sec. David L. Crouch, P.O. Box 125, Troy 63379  
(314) 525-7996

7. EASTERN MISSOURI BEEKEEPERS ASSOCIATION (St. Louis area)  
Sec. Loretta Schook, 1751 Ashby Road, St. Louis 63114
8. CENTRAL MISSOURI BEEKEEPERS ASSOCIATION (Jefferson City area)  
Sec. Shirley Brumley, Rt. 6, Jefferson City 65101
9. HONEY PRODUCERS OF MID-MO (Around the Eldon and Olean area)  
Sec. Phyllis Bond, Rt. 1, Box 46, Olean 65064
10. JEFFERSON COUNTY BEEKEEPERS ASSOCIATION (Around Hillsboro & Cedar Hill)  
Sec. Marko Biscan, 7255 Hwy 30, Cedar Hill 63016
11. MID-MISSOURI BEEKEEPERS ASSOCIATION (Rolla area)  
Sec. Les Burris, P.O. Box 328, Rolla 6  
(314) 364-6663
12. DALLAS COUNTY BEEKEEPERS ASSOCIATION (Buffalo area)  
Sec. Myrna Schultz, Rt. 2, Box 161, Buffalo 65622
13. LACLEDE COUNTY BEEKEEPERS ASSOCIATION (Lebanon area)  
Sec. Liz Gregory, Rt. 3, Box 45, Plato 65552
14. OZARKS BEEKEEPERS ASSOCIATION (Springfield area)  
Sec. Truman Hardin, 1829 W. Washita, Springfield 65807  
(417) 866-2602
15. OZARK MOUNTAIN BEEKEEPERS ASSOCIATION (Branson area)  
Sec. Will St. Clair, Rt. 1, Box 145, Galena 65656
16. SOUTH CENTRAL BEEKEEPERS ASSOCIATION (Mountain View area)  
Sec. J. H. Justis, P.O. Box 42, Mountain View 65548
17. HONEYDIPPERS BEEKEEPERS ASSOCIATION (Fredericktown area)  
Sec. Mike Morris, Rt. 1, Box 166B, Arcadia 63621

## MISSOURI STATE BEEKEEPERS' FALL MEETING

Osage Honey Farm, Sibley

Saturday, October 15, 1983

A.M.

8:30 - 9:00 Registration - no fee

9:00 - 9:05 Meeting called to order by President Roling

9:05 - 9:10 Invocation

9:10 - 9:15 Welcome by the Mayor - the Honorable Earl Wyatt

9:15 - 9:20 Introduction of State Officers, Local Associations and their Officers

9:20 - 9:30 INTRODUCTION TO FORT OSAGE by Mrs. Doris Reed

MORNING  
SESSIONDEMONSTRATION OF HONEY PROCESSING AT OSAGE HONEY FARM  
by Mr. George Vanarsdall and crew

"HONEY PROCESSING" by Dr. Walter Gojmerac

P.M.

12:00 - 1:00 Lunch on the premises

AFTERNOON  
SESSION

"FALL AND WINTER MANAGEMENT" by Dr. Gojmerac

BUSINESS SESSION

DEMONSTRATION OF THE BOTTLING PROCESS AT OSAGE HONEY  
FARM by Mr. Vanarsdall and crew

ALL are invited to attend the Executive Board Meeting on Friday,  
October 14 at 7:30 p.m. in the Topiary and Greenery rooms of the  
Best Western Motel in Blue Springs.

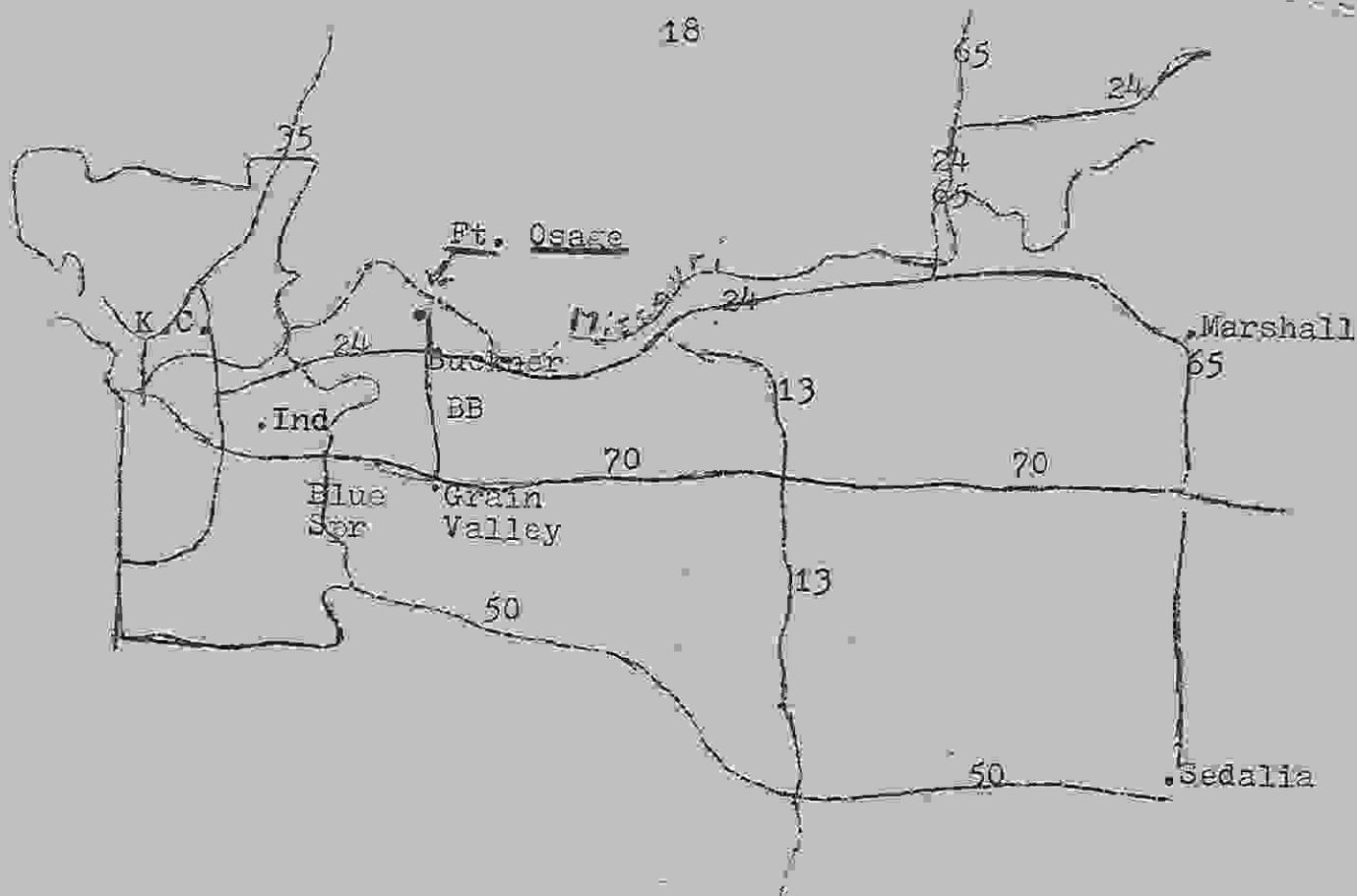
Phone number - (816) 229-6363

All reservations are to be called in collect to Shari Blevins. Be  
sure to state that you are with the Missouri State Beekeepers.

Motel rates are \$28 for a single and \$34 for a double (up to 4 people).

See page 2 of this newsletter for further instructions and directions.





MISSOURI STATE BASKETBALL ASSN.  
619 Wendelschm Drive  
Kirkwood, Missouri 63122

ADDRESS CORRECTION REQUESTED

NON PROFIT ORGANIZATION  
U.S. POSTAGE PAID  
ST. LOUIS, MISSOURI  
PERMIT NO. 1152